

X-Lite Configuration

1. Windows Installation

1. Exit any software applications that use sound such as CD and media players.
 2. Run the setup executable file. This will typically be the X-Lite_Install.exe file (can get from <http://www.xten.com/index.php?menu=products&smenu=xlite>).
- Note: If you have a version of an Xten softphone already running you will be asked to shut it down.
3. Follow the prompts offered by the install wizard. Note: You must accept the license agreement to install X-Lite.
 4. Select Launch X-Lite at the final step of the wizard to start using the softphone.
 5. Click Finish to complete the installation.

2. The Audio Tuning Wizard

Since X-LITE is a software telephone application, you will require both speaker and microphone devices to make calls. Any of the following configurations are acceptable:

1. External speakers and microphone (requires a full-duplex sound adapter)
2. Dual-jack multimedia headset (requires a full-duplex sound adapter)
3. Built in microphone and speakers (requires a full-duplex sound adapter)
4. USB multimedia headset
5. USB phone

When X-LITE runs for the first time, it will open the Audio Tuning Wizard. It is strongly advised that you complete the wizard to make sure that your audio devices are working properly and are set at the right level.

X-Lite Configuration

1. Click the Start button.
2. Select Programs.
3. Select the folder labeled X-Lite
4. Select X-Lite

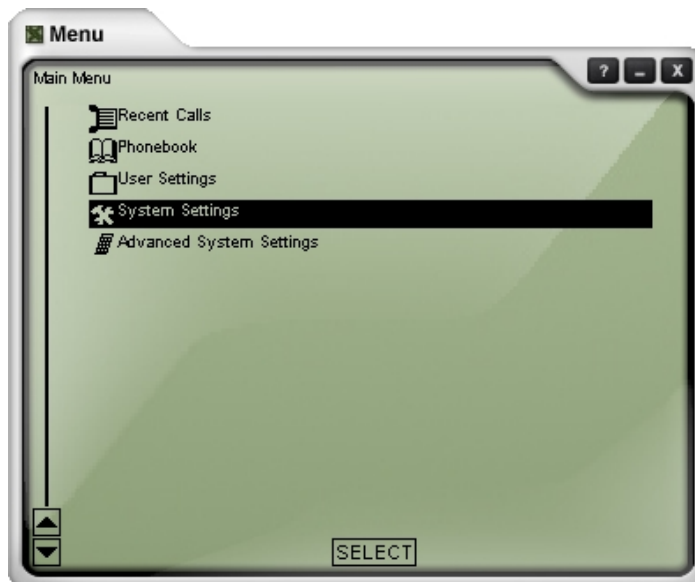
Once Application is open configure the softphone as shown below.

General information on X-Lite

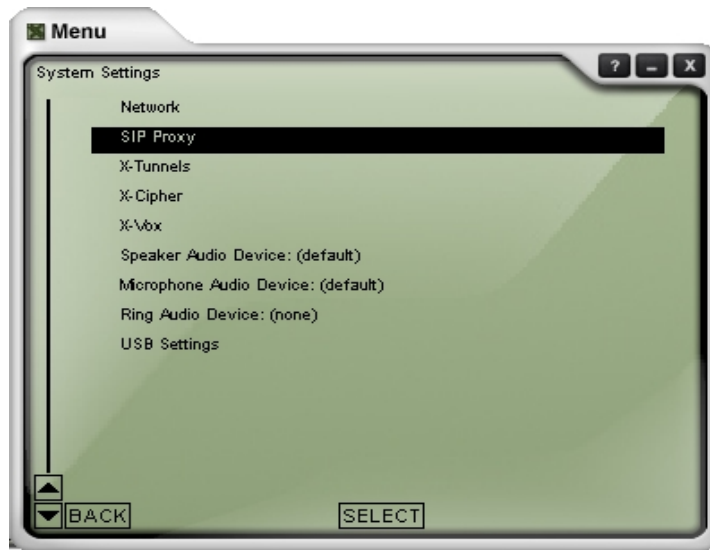


Click on Menu button

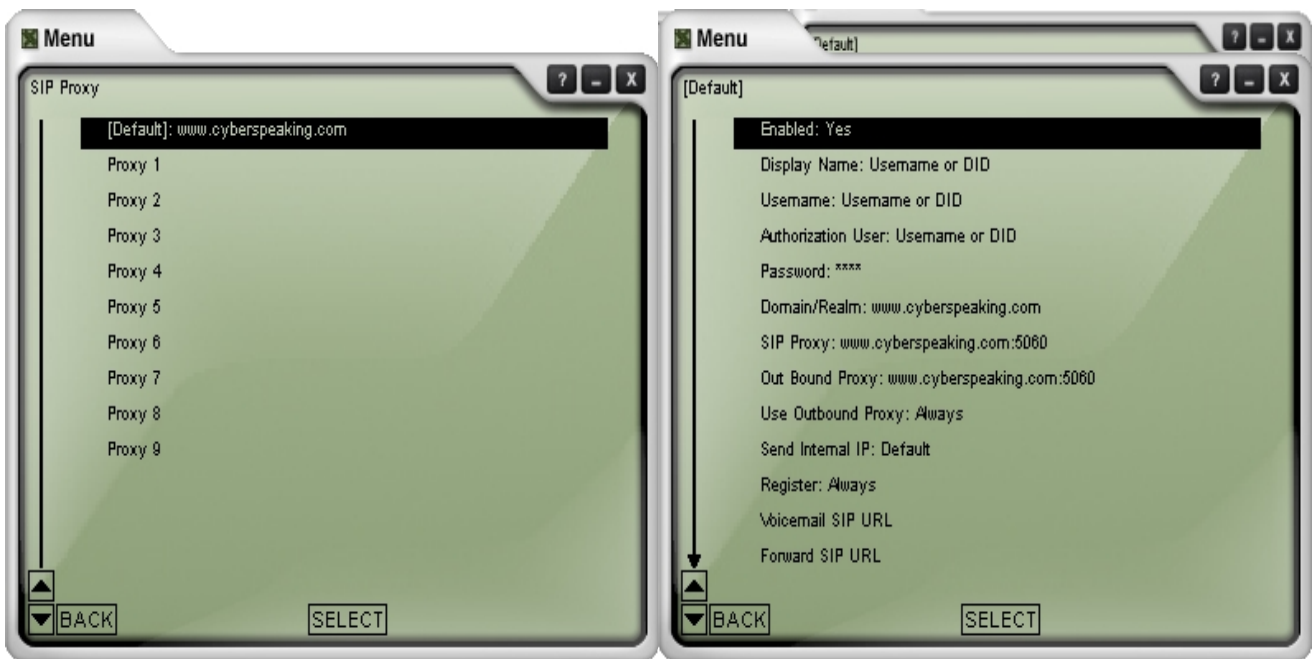
When Menu button is selected following screen appears



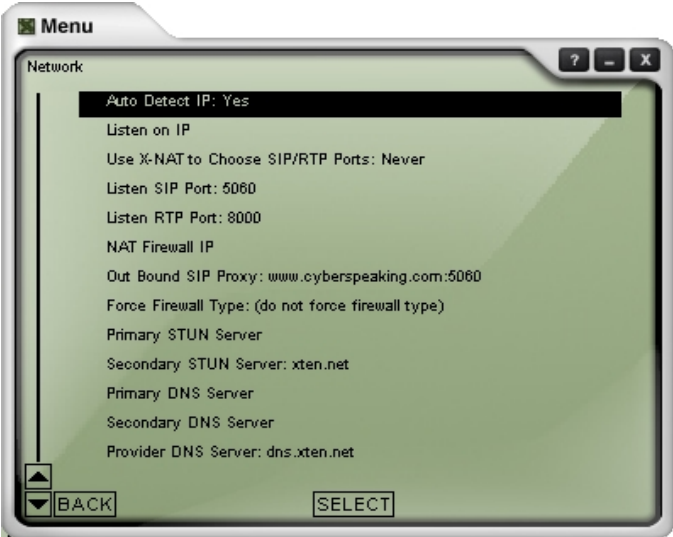
Select system settings and hit enter you will see the screen below



Select SIP Proxy from the list and then select Default and enter the following info
Username: Username or ANI or DID provided by Reseller
Authentication user: Username or DID or ANI Provided by Reseller
Password: Provided by Reseller
Domain /Realm : www.cyberspeaking.com
SIP Proxy : www.cyberspeaking.com
Outbound Proxy : www.cyberspeaking.com



Also in Network make sure you use the correct port 5060 to listen



Now X-Lite is ready to make calls